



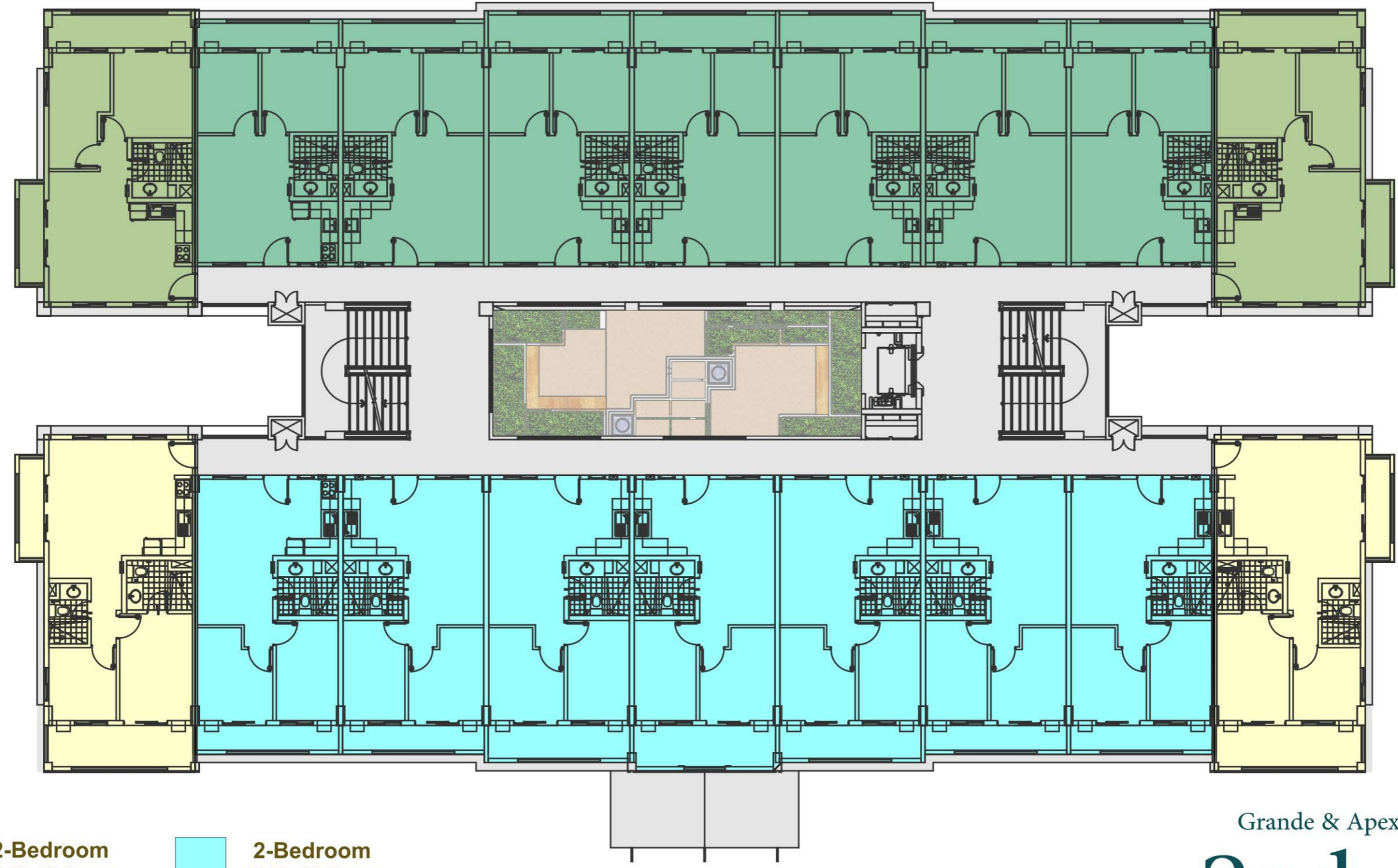


- | | | | |
|---|---------------------------------------|---|---------------------------------------|
|  | 2-Bedroom
78.00 - 78.50 sqm |  | 2-Bedroom
63.50 - 64.00 sqm |
|  | 2-Bedroom
71.50 - 72.00 sqm |  | 2-Bedroom
57.50 - 58.00 sqm |

Grande & Apex Buildings
GROUND
Floor Plan

AS OF JULY 2011
* Floor plans reflected as visuals are not to scale. Actual configurations and features may vary per unit. Please check with your seller the specifications of the particular unit you are interested in or purchasing.
* Unit sizes includes service area and balcony.



- | | | | |
|---|---------------------------------------|---|---------------------------------------|
|  | 2-Bedroom
76.50 - 77.00 sqm |  | 2-Bedroom
59.00 - 62.50 sqm |
|  | 2-Bedroom
68.40 - 70.50 sqm |  | 2-Bedroom
53.00 - 55.00 sqm |

Grande & Apex Buildings
2nd-6th
Floor Plan

AS OF JULY 2011
 * Floor plans reflected as visuals are not to scale. Actual configurations and features may vary per unit. Please check with your seller the specifications of the particular unit you are interested in or purchasing.
 * Unit sizes includes service area and balcony.
 * Landscape atrium is located at the ground floor only